



METAL FABRICATING MACHINERY

# **ACE-SHEAR**

Synchronized Hydraulic Shearing Machine



# **ACE-E21S**



[www.sh-acepress.com](http://www.sh-acepress.com)

ACEPRESS USA opened the door to customers and business partners in Los Angeles in 2008 with a 20,000 square foot facility, where the sophisticated ACEPRESS products are under power.

Our endless commitment to the business success of ACEPRESS customers has pushed us to invest over \$1,500,000 dollars in the inventory at our Los Angeles facility.

Welcome to visit our facility to see a demonstration of our machines at your convenience.



METAL FABRICATING MACHINERY

[www.sh-acepress.com](http://www.sh-acepress.com)

ACEPRESS 30-years concentration makes profession and perfection  
ACEPRESS is a cooperative company of Haas Automation, Inc. in Shanghai China, which is an integrated company committed to the sheet metal equipment research and development, production and sales with a business history of more than 30 years. ACEPRESS has branch companies in the United States, Germany, Netherlands, Australia, South Korea, Japan to make sure prompt and effective service throughout the world.

ACEPRESS is located in the centralized industrial belt in JiaDing District, Shanghai with a convenient transportation to the main trading ports. In accordance with the European design concept and the core technology of research and development in the USA, ACEPRESS has produced easy-to-operate, high-quality and affordable sheet metal processing equipment in cater to the international demands, successfully launched CNC bending machine, CNC shearing machine and other products.

**High-Tech  
CNC Machines  
manufactured by  
ACEPRESS**

- New Generation Fiber Lasers
- CO<sub>2</sub> lasers
- Press Brakes
- Servo Motorized Hybrid Press Brakes
- Plasma Cutting Machines
- Punch Press
- Shear Cutters
- Iron Workers



**We know efficiency is the most important profit issue for you.**

**ACE E21S is designed to cost effective and high efficiency in order to help you stand out of the market.**



**Accurate**



**Creative**



**Efficient**



## E21S

### 剪板机数控装置

CNC Controller for Shearing Machine



#### 产品特性 / Features

- 后挡料控制
- 控制普通电机或变频器
- 智能定位
- 双路可编程数字输出
- 工件计数
- 40个程序存储
- 每个程序25步
- 单边定位
- 退让功能
- 参数一键备份与恢复
- 公英制
- 中 / 英文
- Backgauge control
- Control for general AC motors, frequency inverter
- Intelligent positioning
- Double programmable digital output
- Stock counter
- Program memory of up to 40 programs
- up to 25 steps per program
- One side positioning
- Retract function
- One key backup / restore of parameters
- mm / Inch
- Chinese / English

#### 性能参数 / Specification

<b>显示</b>	<b>Display</b>
160 x 160 LCD显示	160 x 160 LCD display
<b>系统电源</b>	<b>Power</b>
电压: 24V±10%	24V±10%
电流: 1安培	1A
<b>编码器接口</b>	<b>Encoder interface</b>
增量型编码器	Incremental encoder
编码器最大计数频率: 100kHz	Encoder frequency: Max. 100kHz
电压: 12V±5%	Supply: 12V±5%
电流: 最大150毫安	I <sub>max</sub> : 150mA
<b>输入通道</b>	<b>Input channel</b>
输入电压: 24V ±10%	Voltage: 24V ±10%
单通道电流: 最大20毫安	I <sub>max</sub> : 20mA
<b>输出通道</b>	<b>Output channel</b>
外接电压: 24V ±10%	Voltage: 24V ±10%
单通道电流: 最大70毫安	I <sub>max</sub> : 70mA
<b>环境</b>	<b>Environment</b>
工作温度: 0~40°C	Operation temperature: 0~40°C
存储温度: -20~55°C	Storage temperature: -20~55°C
相对湿度: 30%~95%	Relative humidity: 30%~95%





Verticality adjustment and front positioning: The rule for verticality adjustment and front position on the most-left support makes high precision, easy operation, practicality and high efficiency.



Quick knives gap adjustment: Simple and quick manual adjustment makes unlimited adjust to the gap between the up and down knives.



High precision backgauge: Precise ball screw, liner guideway and frequency conversion motor driving system make sure the positioning precision; Unique designed synchro drive mechanism makes stability and reliability.



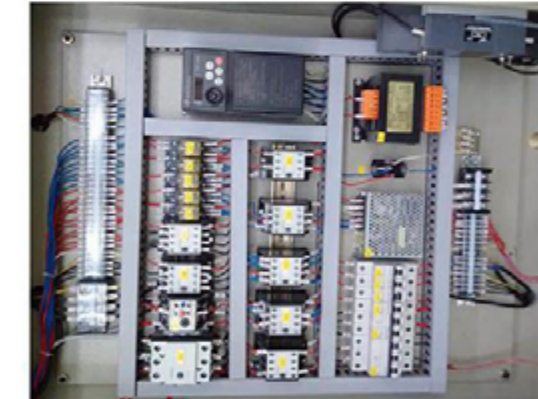
Cylinder with unique structure: Spring structure cylinder with special material gasket to avoid the scratch on the sheet metal.



Premium knives: Made of high quality alloy steel materials can meet the requirements for the durability and pressure.



Integrated hydraulic system: Stable integrated system help avoiding the troubles caused by the oil leak.



Siemens electrical apparatus elements mainly make sure the security and precision.

# Technical Features



Type	Max Thickness (mm)		Cutting Length (mm)	Throat Depth (mm)	Shearing Angle(°)	Blade Length (mm)	Shearing Speed (Cuts/min)	Back Gauge Specification		Front Holder Quantity		Motor Power (kw)	Oil Tank Capacity (L)	Weight (kg)	L*W*H (mm)
	<450N/mm2	<700N/mm2						Travel (mm)	Speed (mm/sec)	Number (PCS)	Length (mm)				
4×2500	4	2.5	2500	100	1°30'	2600	10~12	600	180	3	800	5.5	220	3800	3040*1610*1620
4×3200	4	2.5	3200	100	1°30'	3300	10~12	600	180	3	800	5.5	290	5000	3840*1610*1620
4×4000	4	2.5	4000	100	1°30'	4100	8~10	600	180	4	800	5.5	290	6500	4600*1700*1700
4×6000	4	2.5	6000	100	1°30'	6100	5~7	600	180	6	800	11	380	11000	6460*2100*3200
6×2000	6	4	2000	145	1°30'	2100	10~12	600	180	3	800	7.5	220	4000	2540*1610*1620
6×2500	6	4	2500	145	1°30'	2600	10~12	600	180	3	800	7.5	220	5000	3040*1610*1620
6×3200	6	4	3200	145	1°30'	3300	9~11	600	180	3	800	7.5	290	6000	3840*1610*1620
6×4000	6	4	4000	145	1°30'	4100	8~10	600	180	4	800	7.5	290	8000	4620*1750*1700
6×5000	6	4	5000	145	1°30'	5100	6~8	600	180	5	800	7.5	380	10500	5400*1750*1700
6×6000	6	4	6000	145	1°30'	6100	5~7	600	180	6	800	11	380	16500	6480*2100*2300
8×2500	8	5	2500	300	1°30'	2600	10~12	600	180	3	800	7.5	220	6000	3040*1700*1700
8×3200	8	5	3200	300	1°30'	3300	8~10	600	180	3	800	7.5	290	7200	3860*1700*1700
8×4000	8	5	4000	300	1°30'	4100	8~10	600	180	4	800	7.5	290	8800	4640*1700*1700
8×5000	8	5	5000	300	1°30'	5100	8~10	600	180	5	800	7.5	380	11500	5400*2400*2000
8×6000	8	5	6000	300	1°30'	6100	8~10	600	180	6	800	11	380	18000	6480*2100*2350
10×2500	10	6.5	2500	300	1°30'	2600	9~11	600	180	3	800	11	320	7300	3040*1700*1700
10×3200	10	6.5	3200	300	1°30'	3300	9~11	600	180	3	800	11	420	8000	3860*1700*1700
10×4000	10	6.5	4000	300	1°30'	4100	8~10	600	180	4	800	11	420	12000	4650*2100*2000
10×6000	10	6.5	6000	300	2°	6100	5~7	600	180	6	800	15	520	24000	6500*2100*2300
12×2500	12	8	2500	300	2°	2600	9~11	600	180	3	800	18.5	360	9000	3140*2150*2000
12×3200	12	8	3200	300	2°	3300	9~11	600	180	3	800	18.5	500	10800	3880*2150*2000
12×4000	12	8	4000	300	2°	4100	8~10	600	180	4	800	18.5	500	13000	4680*2150*2000
12×5000	12	8	5000	300	2°	5100	6~8	600	180	5	800	18.5	520	16000	5900*2150*2000
12×6000	12	8	6000	300	2°	6100	5~7	600	180	6	800	18.5	600	29000	6900*2600*2700
12×8000	12	8	8000	300	2°	8100	5~7	600	180	8	800	18.5	620	46500	9000*3500*3500
16×2500	16	10.5	2500	320	2°30'	2600	9~11	600	180	3	800	18.5	360	11000	3140*2150*2000
16×3200	16	10.5	3200	320	2°30'	3300	8~10	600	180	3	800	18.5	500	13000	3880*2150*2000
16×4000	16	10.5	4000	320	2°30'	4100	8~10	600	180	4	800	18.5	500	16300	4650*2150*2200
16×5000	16	10.5	5000	320	2°30'	5100	6~8	800	180	5	800	18.5	520	20000	5900*2600*2700
16×6000	16	10.5	6000	320	2°30'	6100	5~7	800	180	6	800	22	550	36000	6900*2700*2700
20×2500	20	13	2500	320	3°	2600	8~10	800	180	3	800	22	540	15500	3440*2300*2500
20×3200	20	13	3200	320	3°	3300	8~10	800	180	3	800	22	800	18000	4150*2350*2700
20×4000	20	13	4000	320	3°	4100	5~7	1000	180	4	800	22	800	21000	4850*2350*2700
25×2500	25	16.5	2500	320	3°	2600	8~10	1000	180	3	800	37	800	19000	3200*2700*2900
25×3200	25	16.5	3200	320	3°	3300	5~7	1000	180	3	800	37	800	23000	4200*2700*2900
25×4000	25	16.5	4000	320	3°	4100	5~7	1000	180	4	800	37	800	27000	3850*2700*2900
30×2500	30	20	2500	320	3°	2600	5~7	1000	180	3	800	37	800	23500	3300*2900*2900
30×3200	30	20	3200	320	3°	3300	5~7	1000	180	3	800	37	800	27500	4200*2900*2900

## Throughout the lifecycle of your machine



As one of the leading technology suppliers, ACE is a one-stop shop for all of your technology needs: machines, automation, storage technology and services.

Regardless of the ACE technology you use, you will always get the best service. With our award-winning spare parts logistics, we guarantee the highest spare parts availability and provide you with all of the products in the shortest time.

ACE offers you individual financing solutions quickly and without a lot of paperwork. Our service technicians are highly trained and always available when you need them.



China  
Contact: Xiang  
Tel: +86 02151987880  
E-mail: [info@sh-acepress.com](mailto:info@sh-acepress.com)  
Address: No.5888 Baoqian Road, Jiading District Shanghai

USA  
Contact: Dennis  
Tel: +1 310 866 3888  
Email: [dennis@sh-acepress.com](mailto:dennis@sh-acepress.com)  
Address: 5388 Arrow Highway, Montclair, CA. 91763

Russia  
Contact: Sasha  
Tel: +79 164294433  
Email: [sasha@sh-acepress.com](mailto:sasha@sh-acepress.com)  
Address: Metro Tuskaya, Gasmanovskaya lane, 2, building 1, Moscow

Nigeria  
Contact: Pius  
Tel: +234 816 804 6355  
Email: [pius@sh-acepress.com](mailto:pius@sh-acepress.com)  
Address: Alagbaka Quarters ,Behind Bank of Industry. Akure.Ondo State.

Pakistan  
Contact: Faisal  
Tel: +92 321 201 0826  
Email: [faisal@sh-acepress.com](mailto:faisal@sh-acepress.com)  
Address: Plot No.10, Sector 12-C, North Karachi Industrial Area, Karachi